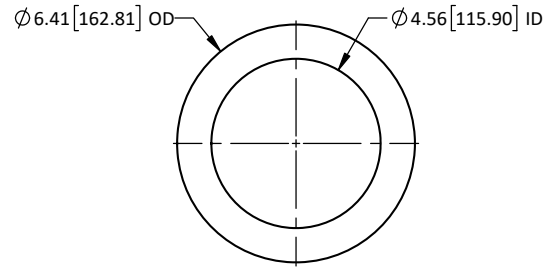


ROOF MOUNTING FLANGE

2 PIECES REQ'D PER ASSY
MAT'L: ALUMINUM

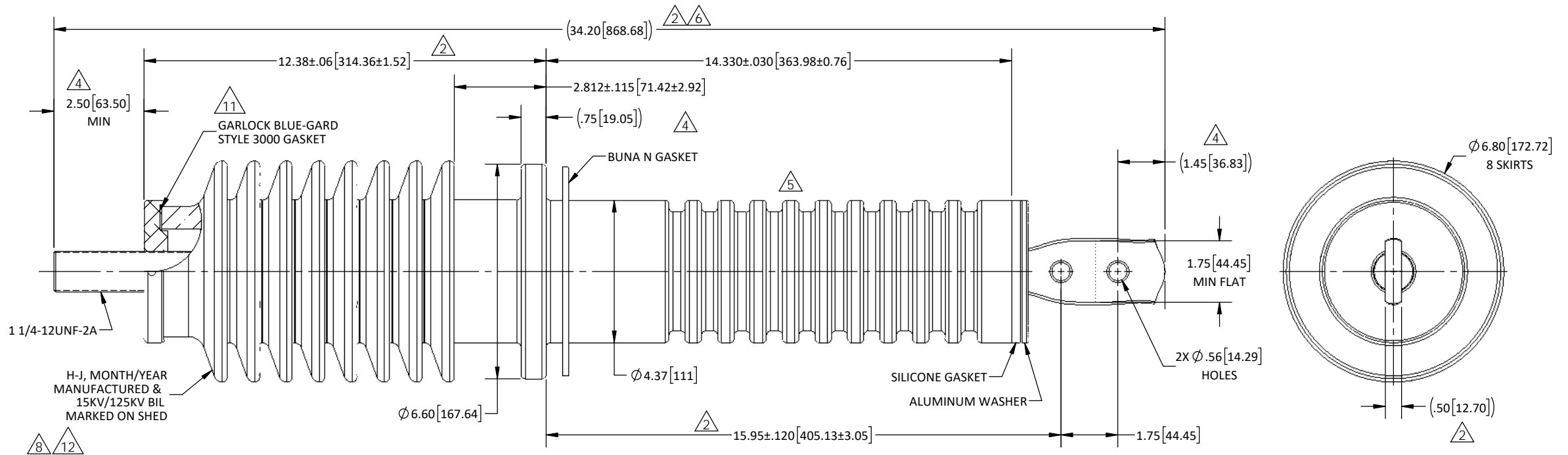


BUSHING TO ROOF GASKET

1 REQ'D PER ASSY
MAT'L: .19" ±.020 THK NITRILE BUNA N



REVISIONS					
REV.	DATE	ECN #	DESCRIPTION	BY	APP'D
1	11/1/01		CHG'D PART # FROM ASXXXX-024	CJT	LHE
2	12/20/01		REVISED DIMS AND TOLS	CJT	JFS
3	3/1/02	HJ02-033	CHG'D MIN CREEPAGE FROM 24.5" & 18.3"	CJT	JFS
4	2/19/02	HJ03-012	ADDED DIMS	CJT	SP
5	3/24/03	HJ03-033	ADDED 2 SKIRTS, REVISED CREEP	CJT	SP
6	4/8/03	HJ03-043	REVISED OVERALL LENGHT, WAS 33.66"	CJT	SP
7	10/23/03	HJ03-112	ADDED NOTE 7	CJT	SP
8	5/11/04	HJ04-088	REV DESCRIPTION, ADDED NOTES 8 & 9. SHED MARKING & CERT NOTE	JRM	SP
9	3/26/07	HJ07-035	REMOVED TENZALLOY	PWD	JM
10	12/12/13	HJ13-035	ADDED DIM	CLS	BLB
11	3/31/2015	HJ15-077	ADDED GASKET. SW REDRAW. REFORMATTED TO C-SIZE	TJF	BLB
12	2/25/2016	HJ16-028	REM LABEL NOTE. EDITED NOTE. REFORMATTED DWG TO B-SIZE	TJF	BLB
13	4/5/2017	HJ17-093	UPDATED LAPEM SPEC #: WAS NRF-008-CFE-2000 -TO- CFE 53100-84	TJF	BLB



PORCELAIN NOTES:

1. WET PROCESS ELECTRICAL PORCELAIN
2. GRAY GLAZE MUNSELL 5BG 7.0/0.4
3. TOLERANCE ±3% WITH NOTHING LESS THAN ±.03, UNLESS OTHERWISE NOTED ON DRAWING
4. BIL: 125kV
5. 60HZ WITHSTAND: 50KV DRY 45KV WET
6. CREEPAGE: > 25.20" TOP > 18.30" BOTTOM
7. TOP & BOTTOM TERMINALS ARE TIN PLATED
8. APPROVED FOR COASTAL AND HIGH CONTAMINATION ENVIRONMENTS.
9. FOR AIR-TO-AIR APPLICATION.



CERTIFIED BY CFE/LAPEM (CFE BE1C1251250)
BASED ON MEXICAN STANDARD CFE 53100-84



PROPRIETARY AND CONFIDENTIAL
THE INFORMATION CONTAINED IN THIS DRAWING IS THE SOLE PROPERTY OF H-J ENTERPRISES, INC. ANY REPRODUCTION IN PART OR AS A WHOLE WITHOUT THE WRITTEN PERMISSION OF H-J ENTERPRISES, INC. IS PROHIBITED.
REMOVE ALL BURRS & SHARP EDGES

TOLERANCES
(EXCEPT AS NOTED) DIMENSIONS ARE SHOWN IN INCHES
DECIMAL ±.032/.8mm
FRACTIONAL ±
ANGULAR ±2°



H-J ENTERPRISES, INC.
3010 HIGH RIDGE BLVD. HIGH RIDGE, MD. 63049 USA
PHONE 1-636-677-3421 FAX 1-636-376-1915
15kV/125kV/1250A PORCELAIN BUSHING ASSEMBLY
MATERIAL SEE DRAWING
CHK'D - APP'D - DRAWING NO. AS1423-001
DRAWN BY CJT DATE 6/6/01 SCALE N.T.S.

